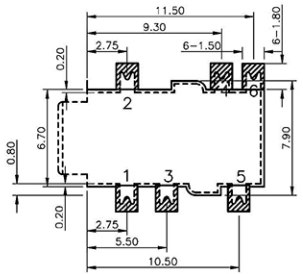
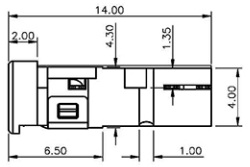
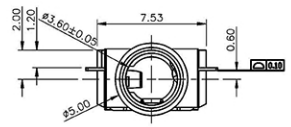
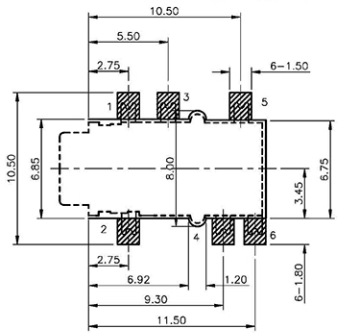


3D VIEW

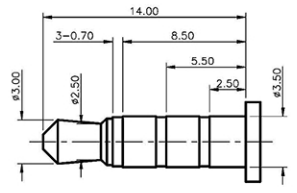
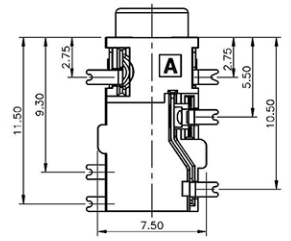
- NOTES:  
 1. REQUEST OF THE SPECIFICATION:  
 1.1 CONTACT CURRENT RATING: 1A;  
 1.2 CONTACT RESISTANCE: 100 mΩ MAX.;  
 1.3 INSULATION RESISTANCE: 100MΩ MIN.;  
 1.4 DIELECTRIC WITHSTANDING: 500V AC MIN.;  
 1.5 DURABILITY: 5,000 CYCLES MIN.;  
 1.6 CONNECTOR MATING FORCES: 29.8N (3.00Kgf) MAX.;  
 1.7 CONNECTOR UNMATING FORCES: 2.98N(0.30Kgf) MIN.;



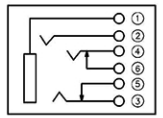
正贴 P.C.B LAYOUT TOP VIEW



P.C.B LAYOUT TOP VIEW 反贴



(ø3.50mm 4 POLE PLUG DETAIL DRAWING)



SCHEMATIC

Model No.: ST-3550